

# packgen Corp.

## 11HG2W\* Composite Packaging

### MATERIALS:

1. Container with  
Pre installed Liner(s)
  2. Riged Cover
  3. Plastic Ties for securing  
Liner(s)
- Required Additional Items  
1 Pallet (**Pallets Must Meet  
Specific Minimum Requirements!**)  
See reverse side for pallet details.  
3/4" Roofing Nails

### NOTE:

-178.707 (c)5(ii) The outer packaging must be secured to any detachable pallet to ensure stability in handling and transportation. Where a detachable pallet is used, its top surface must be free from sharp protrusions that might damage the IBC. See reverse Side for Details

- When stacking is allowed  
(see container marking)
- STACK ONLY WHEN FULL  
by Volume**
- **Maximum Stack 2 Units  
High**
- The Lift Straps are to aid the  
discharging of the container  
and are NOT to be used in  
transport.**

\*CA2006040035

packgen

P.O. Box 1970 - 160 Cascades Drive  
Auburn, Maine 04211-1970

Tel: 207-784-4195 Fax: 207-777-3178

Web Site: [www.packgen.com](http://www.packgen.com)

E-mail: [service@packgen.com](mailto:service@packgen.com)

Revised 08/1/17

### Instructions:

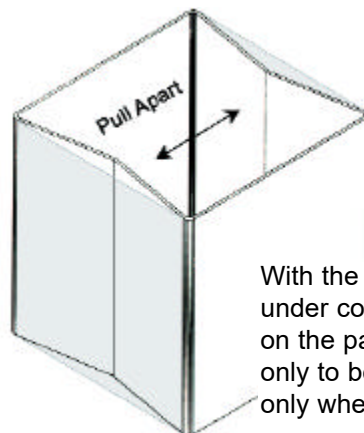
- 1** Arrives folded down



- 2** Assembly Prior to Filling:  
Stand container on end.  
-Set unit on pallet with the Label (s)  
facing the open sides of the pallet.  
-The Liner is pre-installed. To fully  
expand container pull inner liner out  
and gather along the top edge of the  
container. Carefully expand the  
packaging by pulling the "V"eed  
sidewalls apart until they are  
straight.

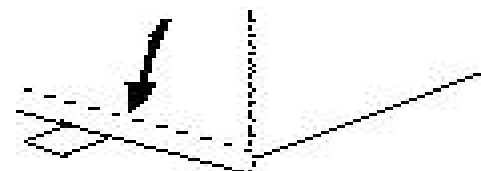
Square up on pallet. Unit should sit  
inside the perimeter board and not  
overhang pallet with a label facing  
the open side of the pallet.

Containers prepared for shipment  
must NEVER overhang pallet or  
failure of container may occur.

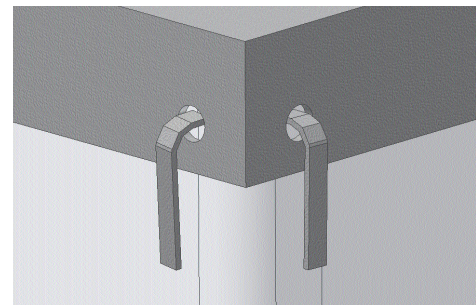


- 3** Use a 3/4" Roofing nail attach  
the container to pallet by  
nailing through attachment tabs at  
the bottom of the container. Heavy  
wire staples (16ga or equal) may  
also be used.

"See Note"



- 4** To Fill:  
Care should be taken when  
filling the container as the liner can  
be pulled down into the container  
making closure of the liner difficult.  
When filling start slowly until you  
are sure that the lining has not  
shifted.



With the cover in place the top lifting straps are unavailable for use under conditions normal to transport. The cover must remain in place on the package while in the transportation system. Top lift straps are only to be used for discharging the container by the end-user and only when transportation activities have ended. (See CFR 49 171.1)

- 5** To Close:  
Gather the liner twist, and close  
with the cable tie provided placed  
approximately 6 inches down from the  
top edge of the liner assemble the tie  
and pull tight.

The outer liner is pulled up and over  
the inner - twist, and close with plastic  
zip tie as with the first.

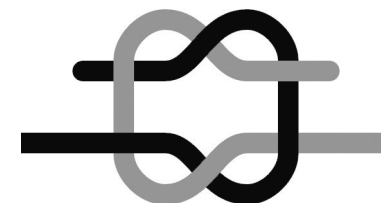
Before placing the cover on the  
container assure that the tie-straps  
connecting the lifting loops together  
are in place.

Place the cover on the container.

Secure the cover with the fabric ties  
provided.

With the cover in place and the  
package ready for transport, handling  
is accomplished via the base pallet.

Only the authorized marking on the  
container governs the proper use and  
restrictions of the container. The UN  
marking is located on the side of the  
container and has information such as  
the packaging type, group, stack test  
load, permissible gross mass, etc.  
(49 CFR 178.702-3 marking of IBCs)



GRANNY KNOT

See Reverse Side



