

# Packgen Corp.

## 11HG2 Composite Packaging

### MATERIALS:

1. Container
2. Pre installed Liner
3. Plastic Ties (2)

### Required Additional Items

- 1 Pallet (**Pallets Must Meet Specific Minimum Requirements!**)  
See pallet drawing for details.  
3/4" Roofing Nails

### NOTE:

-178.707 (c)5(ii) The outer packaging must be secured to any detachable pallet to ensure stability in handling and transportation. Where a detachable pallet is used, its top surface must be free from sharp protrusions that might damage the IBC. See reverse Side for Details

- When stacking is allowed (see container marking)
- STACK ONLY WHEN FULL by Volume**
- **Maximum Stack 2 Units High**
- The Lift Straps are to aid the discharging of the container and are NOT to be used in transport.**

### Packgen

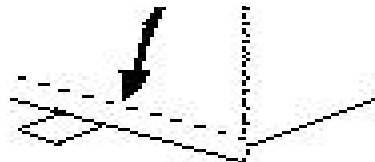
P.O. Box 1970 - 65 First Flight Drive  
Auburn, Maine 04211-1970  
Tel: 207-784-4195 Fax: 207-777-3178  
www.packgen.com  
E-mail: [service@packgen.com](mailto:service@packgen.com)

Revised 08/1/17

## Instructions:

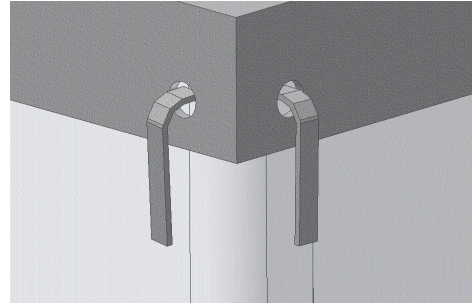
### DO:

- Set unit upright on pallet.
- Expand container pull inner liner with attached support ring and E-Z spin cover up through the outer liner. Remove E-Z spin cover from support ring. Reach inside and extend the fill spout.
- Inflate the container with air, nitrogen or other compatible gas. Fill enough to expand the container.
- With unit expanded, twist the fill spout closed, and reinstall the E-Z spin cover the container will remain inflated and the nitrogen blanket is contained.
- Square up on pallet. Unit should sit inside the perimeter board and not overhang pallet edge with a label facing the open side of the pallet.
- Use a 3/4" Roofing nail attach the container to pallet by nailing through attachment tabs at the bottom of the container. Heavy wire staples may also be used. (16ga or equal)



### To Fill:

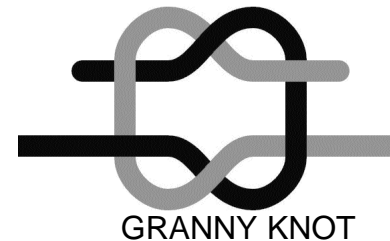
- Position the container and pallet unit under the filling fixture.
- Secure the fill spout to the discharge tube of the filling station.
- Fill the container evenly.



Containers must NEVER overhang the pallet.

Container failure may occur.

- The UN marking is located on the side of the container and has information such as the packaging type, group, stack test load, permissible gross mass, etc. (49 CFR 178.702-3 marking of IBCs)



With the cover in place the top lifting straps are unavailable for use under conditions normal to transport. The cover must remain in place on the package while in the transportation system. Top lift straps are only to be used for discharging the container by the end-user and only when transportation activities have ended. (See CFR 49 171.1)

### To Close:

- Gather fill spout, twist, and with the cable tie provided placed approximately 6 inches down from the top edge of the liner assemble the tie and pull tight.

Push the closed spout into support ring and replace E-Z spin cover making sure the threads and seal area are clean and free of obstructions.

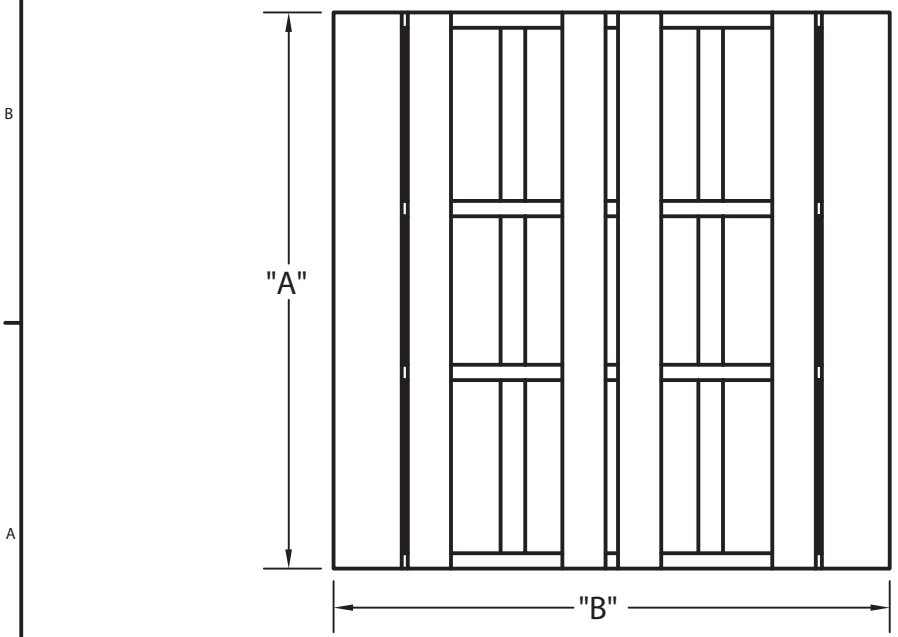
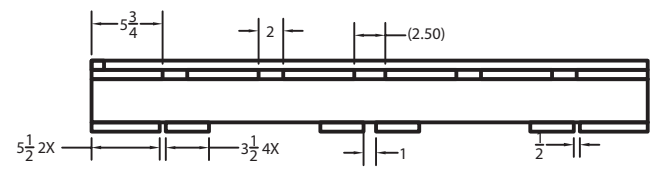
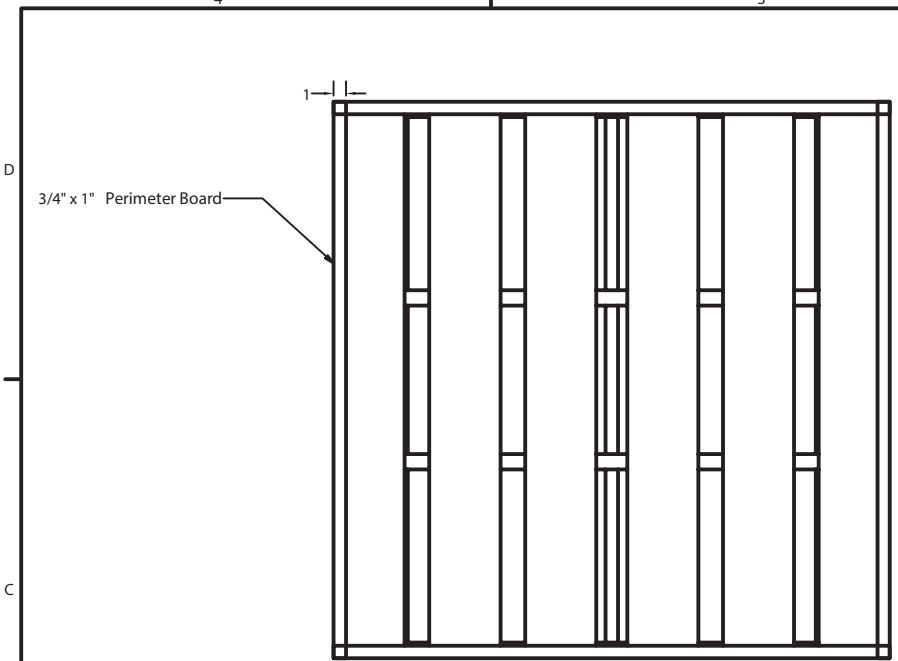
- The outer liner is pulled up and over the inner - twist, and close with plastic zip tie as with the first.

- The cover is a separate assembly and is secured to the container body with fabric ties located at the corners. With the cover resting squarely across the top of the container pull a tie strap through each of the holes in the cover. Using the tie straps make a "square or granny knot" to secure the cover to the container.
- With the cover in place and the package ready for transport, handling is accomplished ONLY via the base pallet. - Container is to be Bottom lifted during all transport activities.

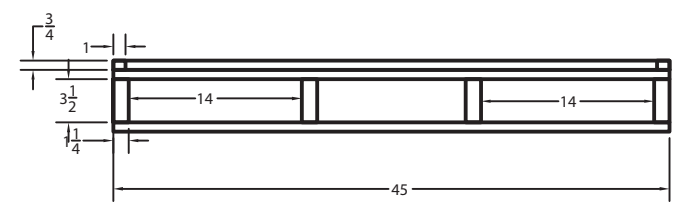
### Sealing the E-Z Spin cover:

This cover uses an O ring to seal the two surfaces, install the cover until the O ring in the cover contacts the base ring. From this initial contact tighten 1/4 turn in the close direction.

Typical Torque Values  
11.3 to 14.1 nm, 100 -125 in lbs



- Notes:
1. Top Deck 3/4 inch, See Table for quantity
  2. Bottom Boards 3/4 inch, See Table for quantity
  3. Runners, See Table for quantity
  4. 1" x 1" Edge Frame, See table for size
  5. The pallets are designed and constructed to the (US) National Wooden Pallet & Container Association recommendations.



- 3						
- 2	48" 48"	7	6	4	4" Sq	
- 1	45" 45"	6	6	4	45" Sq	
DASH	"A" "B"	MIN	MIN			OD
Dimensions		Top Boards	Bottom Boards	Runners	Frame	
DRAWN	11/21/2006					
CHECKED						
QA						TITLE
MFG						-1, 45" x 45", 2 Way Pallet
APPROVED						-2, 48" x 48", 2 Way Pallet
	SIZE	DWG NO			REV	
	A	101665			2	
	SCALE				PAGE	2 OF 2